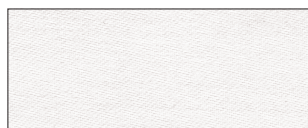


Beschikbare stoffen voor alle modellen en alle technieken  
 Tissus disponibles pour tous les modèles et techniques  
 Fabrics available for all designs and techniques

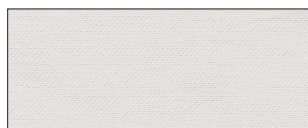
Satijn | *Le satin* | Satin

**PELLA**

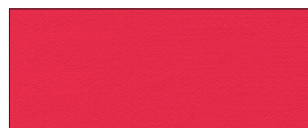
100% satijn katoen, gekamd Egyptisch garen - **TC 300** - 300 cm  
 Satin 100% Coton Egyptien Peigné Longues Fibres - **118 fils/cm<sup>2</sup>** - laize 300 cm  
 100% satin combed Egyptian cotton - **TC 300** - 118"



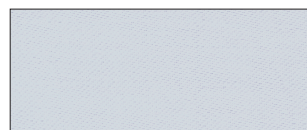
11-10 White



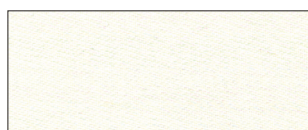
11-57 Paper White



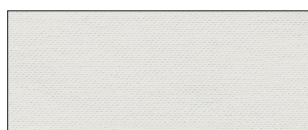
11-20 Poppy Red



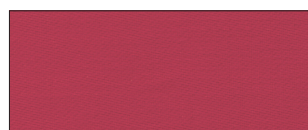
11-86 Glacier Blue



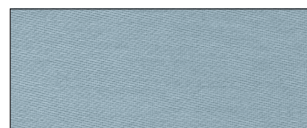
11-12 Vanilla



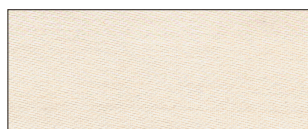
11-59 Greige



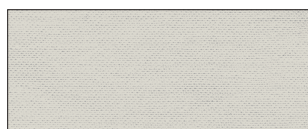
11-23 Red



11-81 Sky Blue



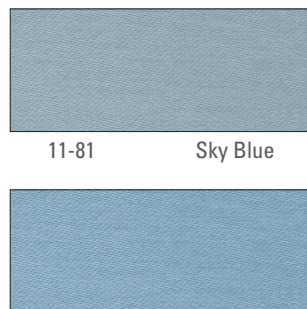
11-14 Cream



11-13 Champagne



11-27 Smokey Rose



11-89 Colonial Blue



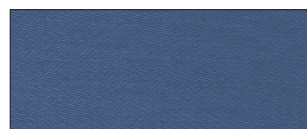
11-90 Sand



11-53 Grey



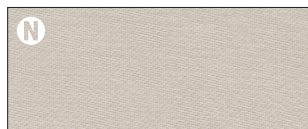
11-26 Petal Pink



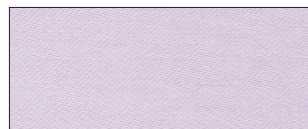
11-83 Cadet Blue



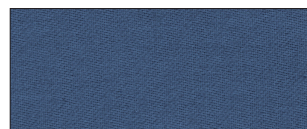
11-92 Taupe



11-54 Fog



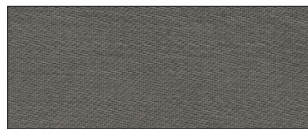
11-46 Lilac



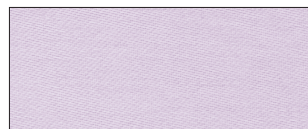
11-80 Navy Blue



11-58 Grey Taupe



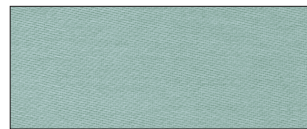
11-56 Chocolate



11-36 Eucalyptus



11-44 Hydrangea



11-33 Sage



11-25 Latte



11-51 Charcoal



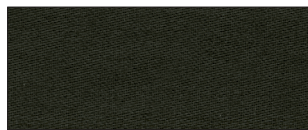
11-45 Amethyst



11-31 Forest Green



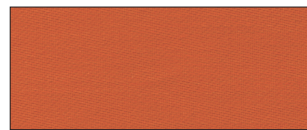
11-94 Cappuccino



11-93 Espresso



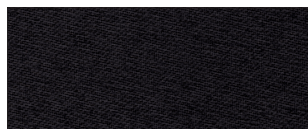
11-47 Plum



11-22 Rust



11-96 Toffee



11-50 Black



11-28 Persimmon